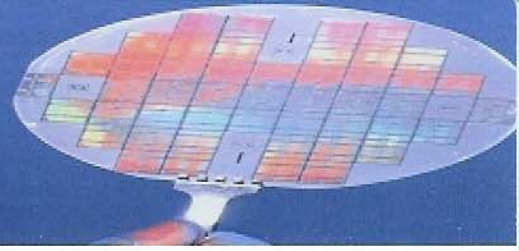


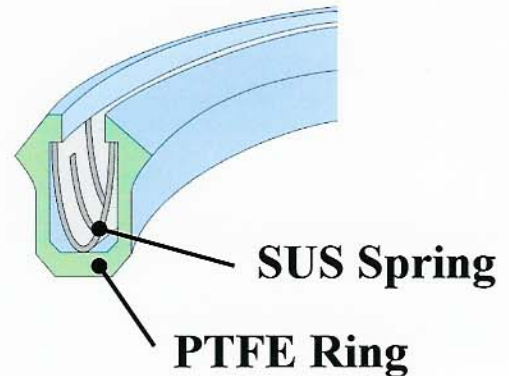
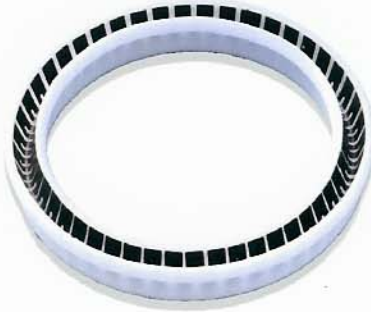
You will be supported  
by our technology,  
resources and experience



## *PTFE U-seal*

*Excellent Chemical, Plasma & Abrasion Resistance*

*P*TFE U-seal is advanced all-purpose seal; optimized combination of a plastic-ring and a corrosion resistant stainless steel spring.



- Excellent chemical resistance
- Wide operating temperature range (-200°C ~ +250°C)
- Long life under non lubricated conditions
- Application examples :
  - Photo-resist Dispensing Equipment
  - Plasma CVD Equipment
  - Rotary Seal for Stepper
  - Carbon Dioxide Supercritical Cleaning Equipment